

Renewable Energy Services



The Future of Energy is in Renewables

Solar



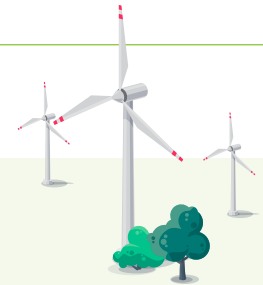
The United States is accelerating solar energy development projects to support a decarbonized energy sector by 2050.¹

Battery Energy Storage (BESS)



Grid-scale U.S. battery storage has been growing since 2021 and is anticipated to grow to more than 30GW by the end of 2024.²

Wind



The U.S. wind industry grew 203% from 2010 to 2020 and is anticipated to continue that growth through 2030.³

Our Services:

- Site Portfolio Support
- Civil Site Design
- Special & Conditional Use Permitting
- Expert Witness Testimony
- Wetland & Waterway Delineation
- T&E Species Surveys
- NPDES, 401 & 404 Permitting
- Stormwater Compliance & SWPPPs
- SPCC Plans
- Phase 1 ESAs
- Water, Soil & Air Sampling & Permitting
- Federal & State Funding Research
- Grant Writing

Montrose Understands Renewables

Founded in 2013, Montrose is one of the fastest growing environmental services companies in the United States. We started as a small Air Quality Consulting company. Today, we leverage our 3,800+ professionals across 75+ offices to provide services for the entire environmental industry.

Known for creative problem solving, our professionals possess not only decades of experience, but also the expertise to develop and implement creative solutions. We perform each project using a four-step process:

1. **Listen to Our Clients:** Early stages are critical to ensure we understand your long-term goals and budgetary requirements. We are here to work with you, not to dictate what you need.
2. **Create a Plan:** We provide a detailed plan for each project clearly identifying the scope of work, team members, project timeline, and proposed cost.
3. **Execute the Project:** With this team in place, we partner with you — we complete projects on time and on budget while keeping you up to date each step of the way.
4. **Remain Flexible:** Sometimes circumstances change, and the project will need to be adjusted. We understand, and we pride ourselves on being agile and easy to work with. That's why we have a 98% client retention rate year over year.

Project Highlights

Two Mile Creek – New York

Montrose supported the siting, feasibility and economic aspects of the Two Mile Creek Solar Facility. To make the project feasible, it was necessary to decrease the insurance costs for the project. Montrose developed an HEC-RAS hydraulic model to determine the current floodplain limits, incorporating regional and onsite condition changes that had occurred since the original FEMA floodplain designation had been determined. The model results showed that the site for the solar facility was feasible outside of the 100-year floodplain thus reducing the insurance costs and making the project viable.



Golden Eagle Solar Cell & Module Facility – New Mexico

The Montrose project team provided environmental due diligence, site study coordination and a National Environmental Policy Act (NEPA) Environmental Assessment (EA) to support a new solar cell and module manufacturing facility in Albuquerque, New Mexico. Montrose led the EA efforts, coordinated with the US Department of Energy's Loan Programs Office (LPO), coordinated team reviews with process engineers, local, state and federal agencies, and worked with the LPO to finalize a Finding of No Significant Impact (FONSI) for the project.

We're ready to get started

We look forward to discussing how Montrose can make a difference for your project.

Long Boat Solar – California

Montrose provided natural resource field survey reports, plans, and permits to support the Long Boat Solar PV Project in San Bernardino County, CA. Other reports included an avian mortality and injury monitoring plan, worker environmental awareness program plan, a cultural resources report, and a fugitive dust control plan. Montrose also represented the client at public meetings and the San Bernardino County Planning Commission final hearing to provide comment responses.

Multiple Utility-Scale Solar & BESS Facilities – North Carolina, South Carolina, Mississippi, Louisiana, Arkansas

Montrose has supported dozens of early site due diligence activities at proposed Solar and Solar + BESS facilities throughout the southeast US. Studies have included Phase 1 Environmental Site Assessments (ESA), wetland delineations and jurisdictional determination requests, and limited NEPA reports. These studies are utilized to support site planning, financing, interconnection applications, and solar array designs.

Chokecherry Wind Energy Project – Wyoming

Montrose conducted an economic impact analysis for the Power Company of Wyoming (PCW) to support the Chokecherry and Sierra Madre Wind Energy Projects in Carbon County, Wyoming. The economic analysis included a community-level housing inventory and a study on local housing resources and community services. The analysis also supported applications for federal, state, and county permits.

Heather Patti, PWS
Senior Associate
 hdpatti@montrose-env.com
 (919) 412-7384
 www.montrose-env.com

