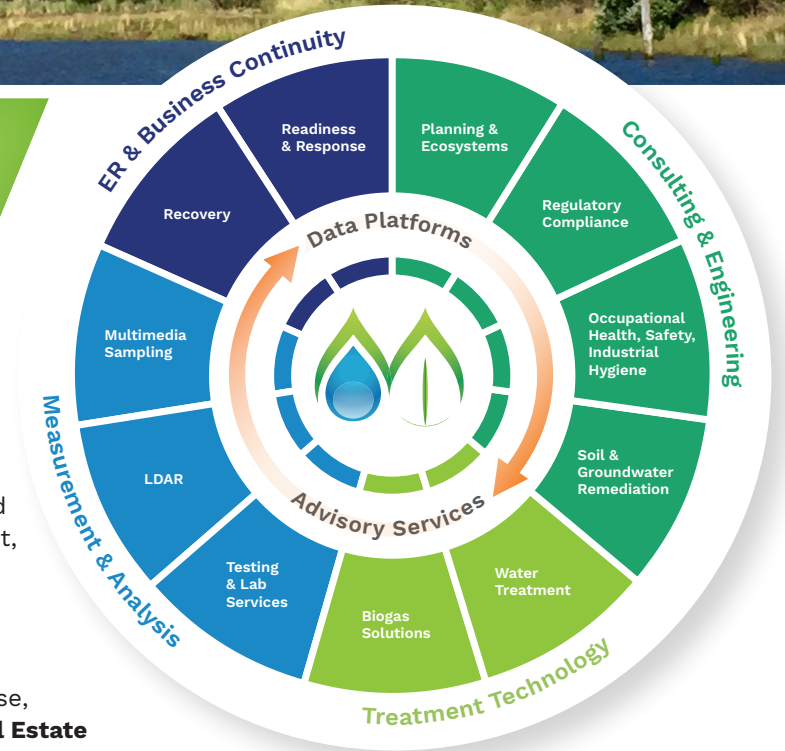




BROWNFIELDS & COMMUNITY REVITALIZATION PRACTICE

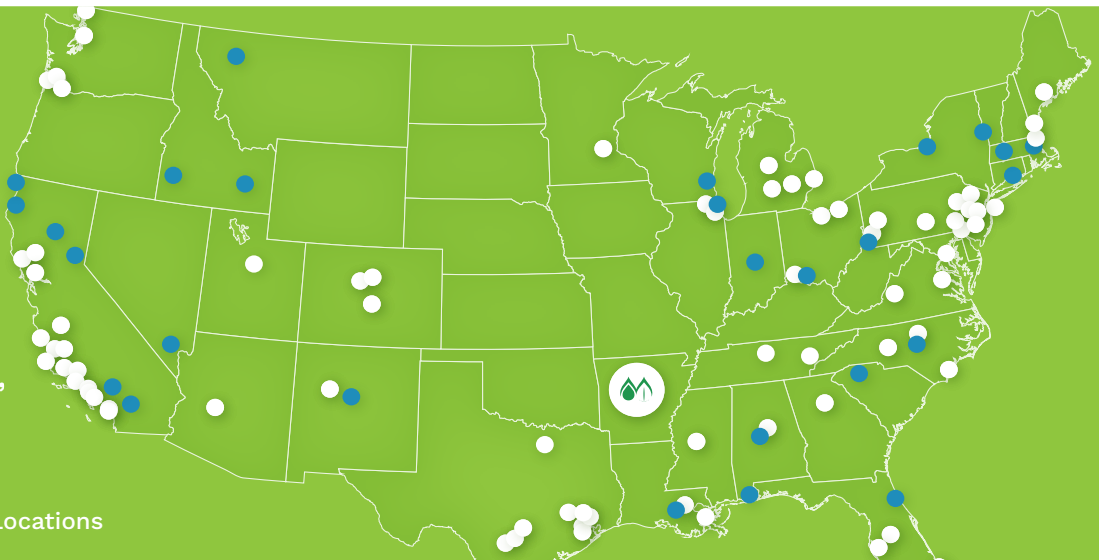
Who We Are

We provide integrated services to assist our clients in building successful programs to achieve their brownfield redevelopment and community revitalization goals. Our **Funding Specialists** secure and leverage grants, loans, and other incentives to support environmental site assessment, cleanup, restoration, and capital improvement projects. Then our **Consulting & Engineering** professionals deliver a full suite of solutions for conventional and advanced site investigation and remediation (CASIR) that combine the consistency of a national practice with deep, local expertise, experience, and regulatory insight. Along the way, our **Real Estate Development** teams include planners, architects, and engineers who can assist with all phases of brownfield redevelopment, from conceptual site design and feasibility analysis to permitting and construction. Additionally, our clients have access to our cutting-edge **Laboratory & Data Management** capabilities, as well as industry-leading **Treatment Technologies**, including products to address PFAS-impacted water and other traditional and emerging contaminants.



A high-growth, diversified environmental services company, Montrose Environmental Group is headquartered in Little Rock, Arkansas with over 3,500 employees and 100 offices in the U.S., Canada, Europe, and Australia.

- Office Locations
- Satellite Office Locations



Funding Specialists

Our network of funding and grant writing specialists has assisted a wide range of local/regional/tribal agencies and community-based organizations with securing and/or implementing over 100 EPA Brownfield Grants (as well as funding from other federal and state programs). Additionally, we develop strategies to finance and eliminate funding gaps in support of all types of community revitalization and capital improvement projects. Once funding is secured, we serve as your trusted partner for grant management and reporting, regulatory compliance, community outreach, and stakeholder engagement activities. Our work has led to award-winning projects and our staff have established long-term relationships with some of the most successful brownfield programs in the country.

Consulting & Engineering

Our engineers, geologists, and scientists specialize in:

- Brownfield Inventories
- Site Selection
- Phase I/II ESAs
- Remediation
- Ecosystem Restoration
- Nature-Based Solutions

Real Estate Development

Our planners, architects, and engineers specialize in:

- Planning & Permitting
- Infrastructure Evaluations
- Feasibility Analysis
- Landscape Architecture
- Civil Site Design
- Geotechnical Engineering

Lab & Data Management

Our national network of accredited laboratories, chemists, and data specialists provide:

- Innovative Science for Sampling & Analysis of Soil, Water, and Air
- Best-In-Class Support
- Quality Assurance
- Data Management/Validation
- Regulatory Expertise
- 3D Visualization and Analysis

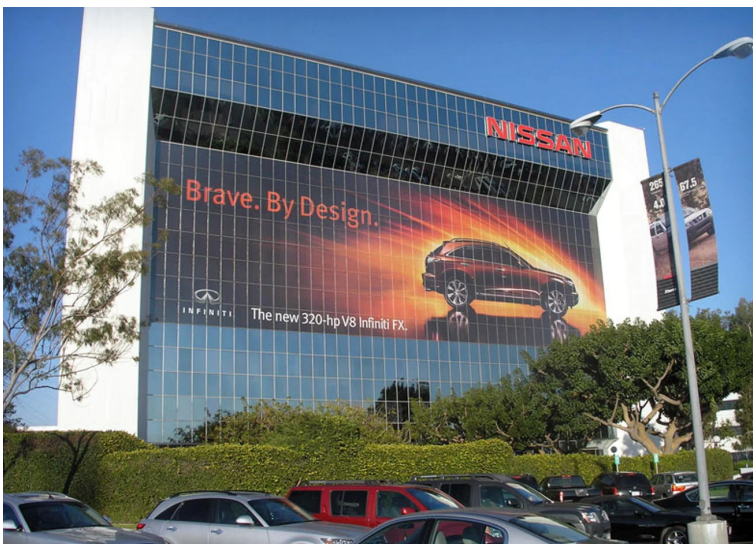
Treatment Technologies

Our services include evaluating remediation strategies, developing action plans, and the design, construction, and operations & maintenance of remediation systems. Our innovative, field-proven technologies provide cost-effective solutions, including:

- Vapor Intrusion Mitigation Systems (VIMS)
- The Only Patented Regenerable Ion Exchange Resin System for PFAS
- Modular Mobile Units
- In-house R&D Lab

The Nissan North America HQ

in Carson, CA underwent a \$4 million cleanup project, transforming the former auto scrap and junkyard into a multi-million dollar business park. The costs of the cleanup were substantially reduced via selection and implementation of the most effective remedial strategies, products and services.



The Knitting Mills Redevelopment

in Wyomissing, PA saw over \$200 million invested in a 54-acre revitalization project. This resulted in the creation of 700,000 square feet of office, lab, medical, educational, and retail space. The project won the 2022 Phoenix Award for EPA Region 3.

