



# Greenhouse Gas Emissions Strategy & Execution for the Oil & Gas Industry

Environmental Advisory Services



[montrose-env.com](http://montrose-env.com)



**MONTROSE**  
ENVIRONMENTAL



# Oil & Gas Faces Unique Challenges in The Face of Climate Change

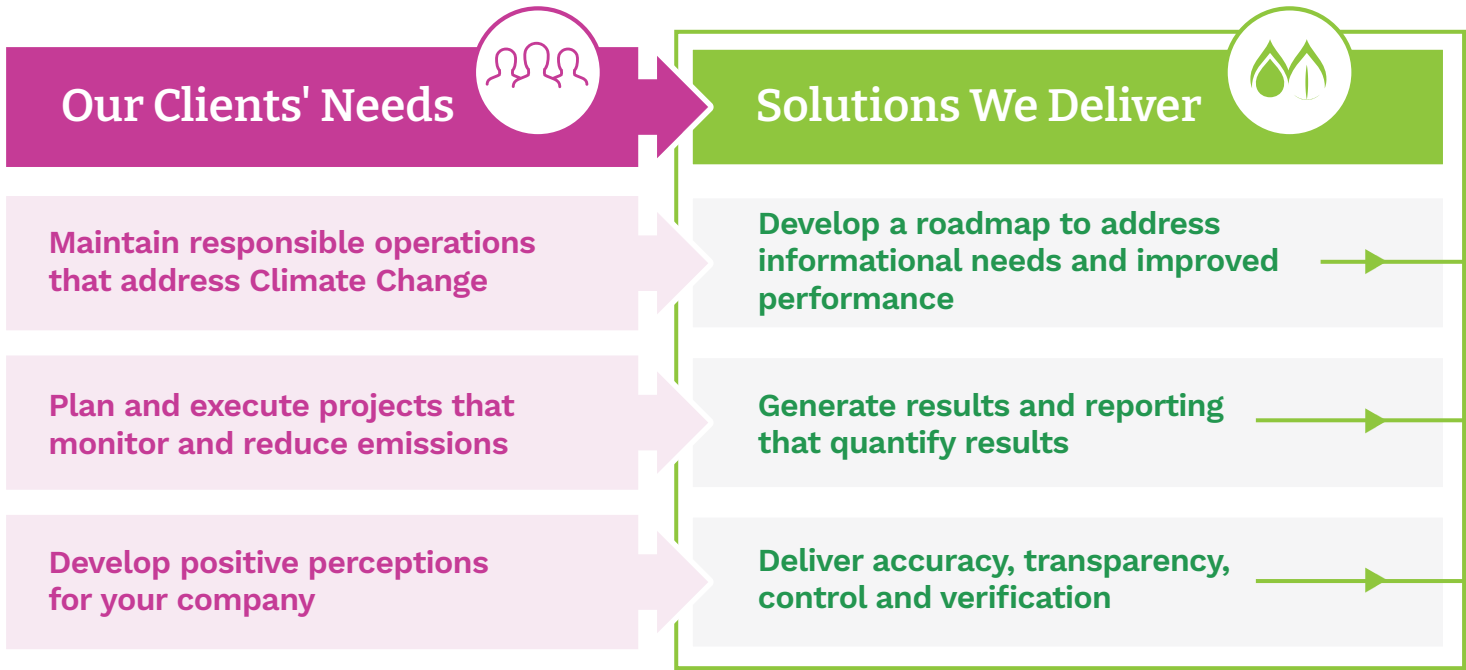
**What is my emissions baseline? Should I commit to a reduction target? Should I get my natural gas Certified?** These are just a few of the questions we hear from our clients everyday. So while there are no easy answers, you can be rest assured you are not alone in asking them!

Stakeholders of all stripes are looking for more voluntary action on the part of the industry, and more stringent regulatory requirements are emerging around the world. It is a dynamic time. The strategies you choose will have implications for your current business, your prospects for growth, and how you will be viewed by customers, investors, employees and the communities in which you operate. You do have options, and we are here to help you sort through them.



## Environmental Advisory Services

The Climate Change / GHG Management Solutions You Need



## Our Services

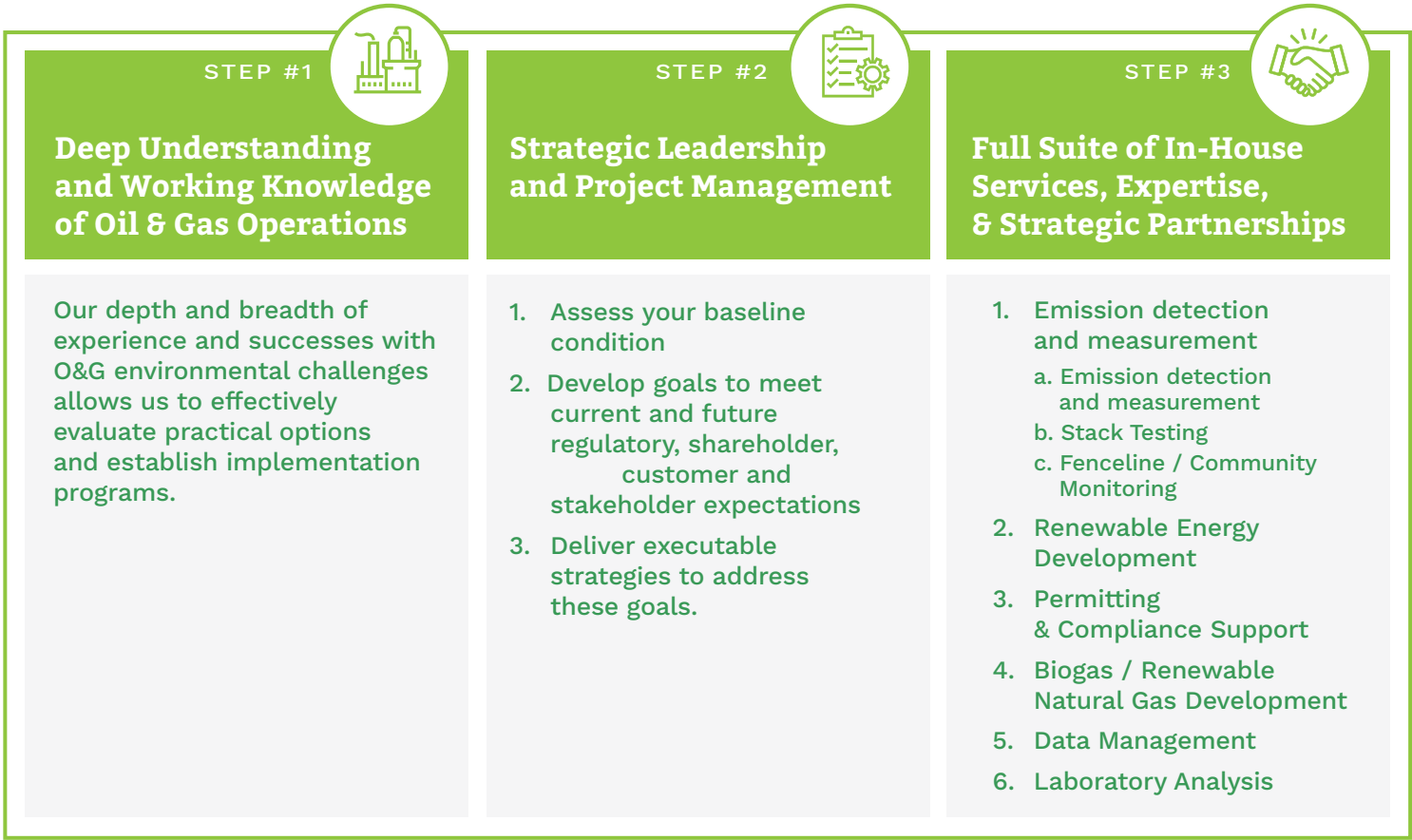
Our expansive list of services under Climate Change / GHG Management Solutions include:

- Strategy and Program Development
- GHG Baseline Assessments and Determination of Assessment Frameworks
- Emission Factor Development
- GHG Reduction Programs (Fugitives, energy use optimization, fleet conversions, carbon capture)
- Renewable Energy Development (Solar, WHP)
- Offset Procurement (RECs, Carbon Offsets)
- Measurement and Verification
- Data Management and Reporting



## Our Roadmap to Your Success

Achieve your Greenhouse Gas (GHG) Emissions goals





## Our People and Expertise Are Here for You

Our clients are facing real environmental challenges. You deserve strategic guidance, and more important, practical execution plans for these strategies. Montrose Environmental Advisory Services is offering a team of experts who have dedicated our entire careers to seeking and delivering practical, concrete environmental strategies and solutions for our clients that truly make a difference for all the stakeholders impacted by these challenges. We are here for you.

### Our People



**Mark Hall**  
VP, Environmental  
Advisory Services

*Strategy and  
Program Development*



**Jared Metcalf**  
VP, US OGI  
Operations

*Fugitive Emissions  
Detection*



**Tanya Jackson**  
VP, US LDAR

*LDAR Program  
Management*



**Melissa Dakas**  
Principal, Environmental  
Advisory Services

*Permitting and  
Project Management*



**Patrick Clark**  
VP, Ambient  
Air Monitoring

*Fence Line and  
Community Monitoring*



**Shawn Nelezen**  
SVP, Testing  
Services

*Stack Testing*



**Peter Zemek**  
SVP, Emerging  
Technologies

*Emerging  
Technologies*



**Matt Beach**  
VP, Software  
Solutions

*Data Security,  
QA / QC, Integration  
& Management*



[montrose-env.com/services/environmental-advisory-services/](https://montrose-env.com/services/environmental-advisory-services/)

## We're ready to get started.

We look forward to speaking with you about how Montrose can make the difference for your projects.

### Mark Hall

VP, Environmental Advisory Services  
e: [mahall@montrose-env.com](mailto:mahall@montrose-env.com)  
m: (630) 292-3914